

# NEOTROPIKEY

[www.kew.org/neotropikey](http://www.kew.org/neotropikey)

**El Jardín Real de Kew tiene el placer de invitarle**

- al lanzamiento oficial de Neotropikey y
- un taller sobre claves electrónicas – cómo hacer claves usando el programa Lucid.

**Se realizará durante el X Congreso Latinoamericano de Botánica, en La Serena, Chile.**



The screenshot shows the Neotropikey website. At the top, it says "Neotropical Flowering Plants" and "neotropikey". Below this, it states "Interactive key and information resources for flowering plants of the Neotropics". A small text block explains that Neotropikey is an international project based at the Royal Botanic Gardens, Kew, developing identification resources for the flowering plants of the Neotropical region (tropical South and Central America). There are two main buttons: "Click to enter key" (with a yellow key icon) and "Click for family synopses" (with a red flower icon). A sidebar on the right contains a navigation menu with links to Home, Family key, Family index, Contributors, Genetic keys, and Glossary. At the bottom, there is a small note: "Find out about other electronic plant identification resources (electronic keys) available from Kew".



The CD-ROM cover is circular with a dark green background. It features the text "Release # 1" and "August 2010" at the top. The word "neotropikey" is written in large, yellow, lowercase letters in the center. Below this, there is a small text block: "If CD does not start automatically, open the file neotropikey.m". To the right, it says "Se o CD não abre automaticamente, abra o arquivo neotropikey.m". At the bottom, it reads "Ferramentas para identificação de plantas neotropicales" and "Recurso para la identificación de plantas neotropicales". Below that, it says "Resources for neotropical plant identification". The Kew logo is at the very bottom. There are small images of a red fruit, a white flower, and a green leaf on the cover.

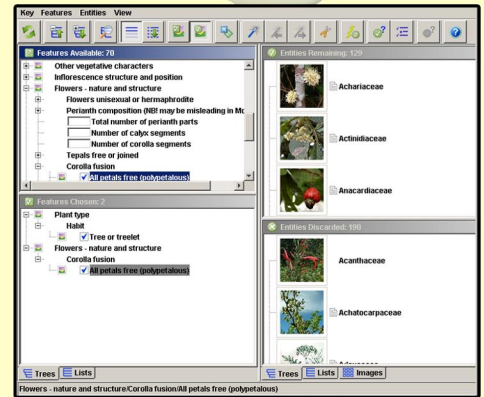
**Fecha: Martes 5 de octubre 2010, entre las 20:00 y 22:00 hrs**

**Lugar: en el Salón Carlos Bertero (Salón Arena)**

**¡Bienvenidos!**

[www.kew.org/neotropikey](http://www.kew.org/neotropikey)

# NEOTROPIKEY



**Neotropical Nymphaeaceae**  
neotropikey

Lidyanne Yuriko Saleme Aona\* and Daniela Zappi\*\*  
Univeridade Federal do Rio de Janeiro (UFRRJ)  
Royal Botanic Gardens, Kew, UK\*\*

Click images to enlarge

**Description**

Perennial, rarely annual aquatic herbs with rhizomes. Leaves simple, alternate, floating, emergent or submerged, petiole long, leaf blade rounded, cordate to peltate, sometimes spiny underneath. Flowers on the water surface (above only in *Nepenthes* Sm.), sessile, with a long pedicel attached to the rhizome; sepals and petals intergrading, sepals 4-6(-12), free to adnate to the ovary, petals 0-70, spiralled or the outer ones 4-verticillate, rarely absent, frequently with a gradual transition to stamens or staminodes, stamens 14-700, spirally arranged, anthers with 2 thecae, mitosis, longitudinally dehiscent, ovary superior to inferior, carpels 3-50, totally or partially fused, stigma sessile, equaling the number of carpels, ovules many, placentation basinal. Fruit a leathery berry or an irregularly dehiscent capsule, few to numerous seeds ovoid to globose, sometimes anilate, testa glabrous to hairy, embryo small, endosperm scant, perisperm abundant, cotyledons 2.

Flower of *Nepenthes* *amazonica* © Peter Ooston, 1995, Kew